

HOMES STARTING AT \$219,180

AN ACTIVE ADULT COMMUNITY

*Tayvis
Estates*



Your Future Restarts Here...

- Dramatic Details & Stunning Accents
- Secure Gated Community
- Majestic Organ Mountain Views
- Private Landscaped Pathways
- Pool and Clubhouse
- Minutes from Golf Course, Hospitals, & Healthcare Offices

NEW MODELS NOW SHOWING

OPEN: WEDNESDAY - SUNDAY 12 PM - 4 PM
OR BY APPOINTMENT
3900 ADRIATIC • LAS CRUCES, NM

RETIREMENT LIVING
WWW.TAYVISESTATES.COM

LUCY BROWN - 575.650.2132
HAYWARD BROWN - 575.649.0398
TRAVIS BROWN - 575.993.9106

STANDARD FEATURES

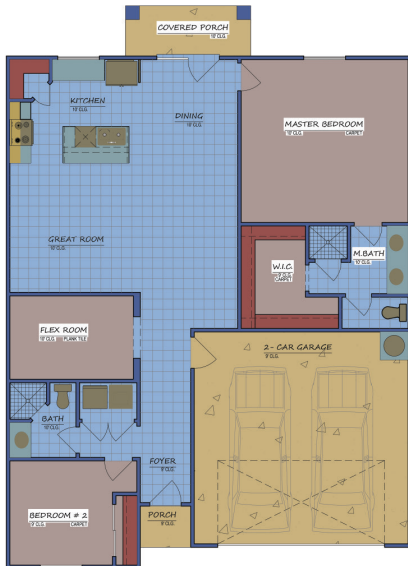
- Stainless Steel Kitchen • French Style Refrigerator • Designer Cabinetry • Staggered Heights & Crown Molding
- Extensive Tile Work Throughout Including Back Splash In Kitchen • High Ceilings in Entry & Great Room
- Courtyard Walls • Final Lot Grading • Hand Trowel Wall Texture • Upgraded Carpet with ½" 6 lb Pad in Bedrooms
- Designer Light Fixtures & Ceiling Fan Packages • 2x6 Frame Construction with Engineered Truss Systems
 - Super Insulation Package R-38 Ceiling & R-21 Walls • Low-E Double Pane Windows with Screens
 - Energy Efficient Heating & Cooling Systems • Synthetic Stucco System with Rock Accents
 - Custom Shelving Throughout • Choice of Satin Nickel or Oil Rubbed Bronze Fixtures/Hardware
 - Granite Countertops Throughout • Undermount Sinks • Decorative Openings

PERSONALIZED FEATURES

- Upgraded Appliance Packages • Optional Ceiling Treatments • Custom Fireplace Inserts • Natural Gas
- Additional Exterior Rock • Custom Trim Upgrades Available • Custom Electrical Upgrades Available
- Complete Alarm System with Smart Wire Package • Entry Courtyards • Cabinet Upgrades • Front & Back Yard Landscaping • ADA Accessible Modifications NO CHARGE • Water Softener • Custom Plumbing Upgrades

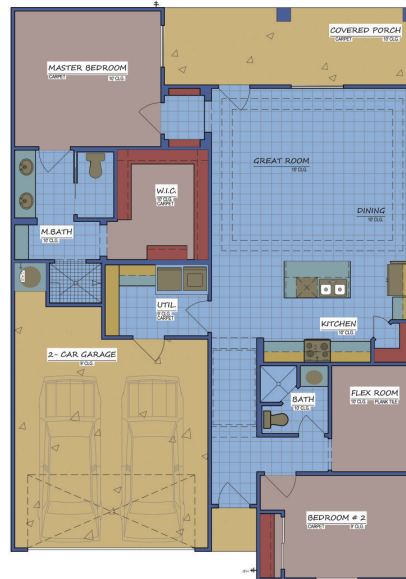
FLOOR PLANS

GRANADA
1405 Sq Ft



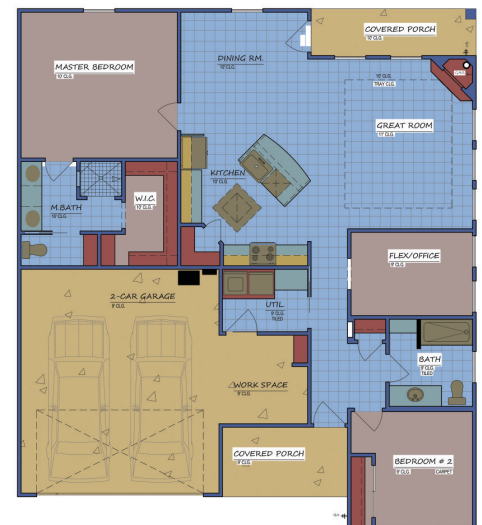
- **BEDROOMS 2**
- **BATHS 2**
- **DINING**
- **GARAGE 2 CAR**
- **FLEX/STUDY**

VALENCIA
1445 Sq Ft



- **BEDROOMS 2**
- **BATHS 2**
- **DINING**
- **GARAGE 2 CAR**
- **FLEX/STUDY**

MARBELLA
1460 Sq Ft



- **BEDROOMS 2**
- **BATHS 2**
- **DINING**
- **GARAGE 2 CAR**
- **FLEX/STUDY**